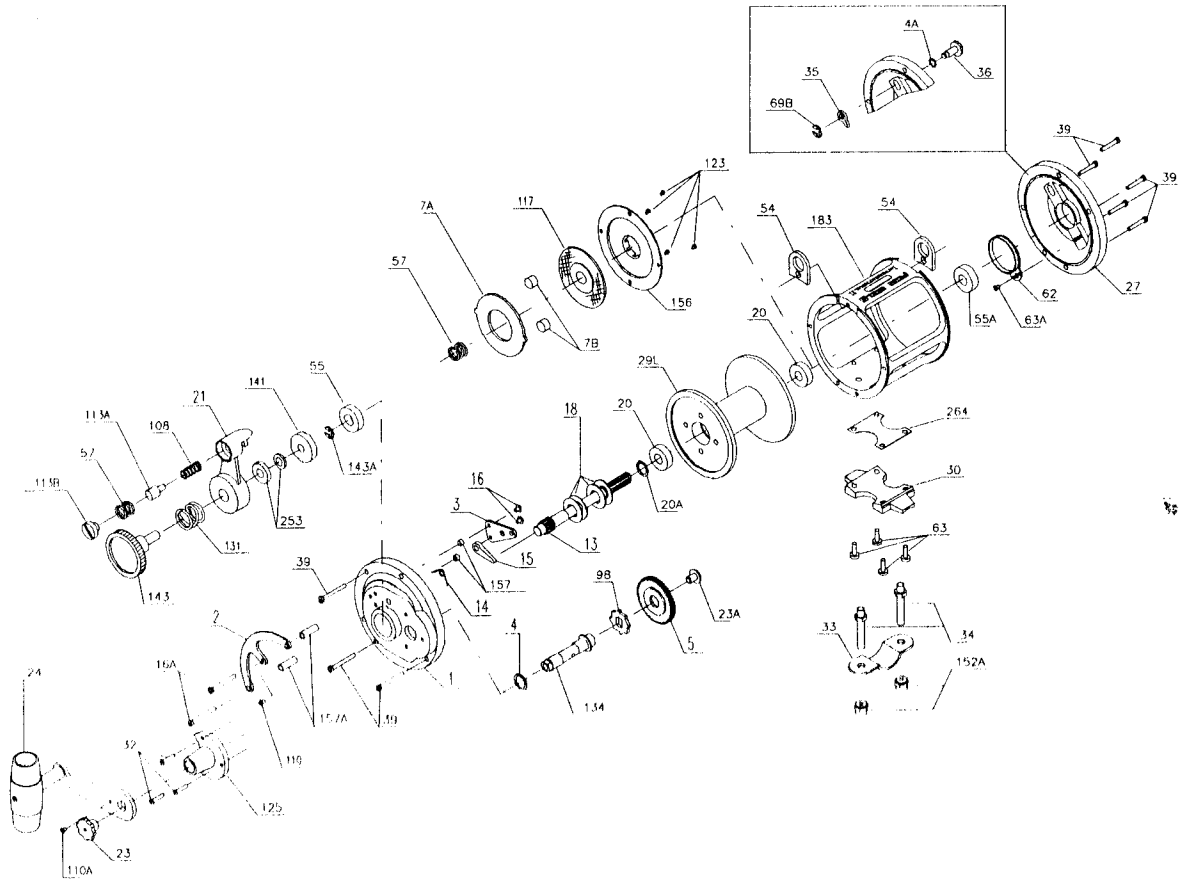




PARTS AND PRICE LIST FOR MODEL 12T



| Key No. | Part No.  | Description                       | Price   | Key No. | Part No. | Description                       | Price  |
|---------|-----------|-----------------------------------|---------|---------|----------|-----------------------------------|--------|
| 1       | 001 012T  | Right Side Plate Assembly         | \$65.00 | 54      | 054 113  | Harness Lugs (2 req.)             | \$1.70 |
| 2       | 002 006   | Quadrant Ring                     | 7.30    | 55      | 055 006  | Ball Bearing                      | 11.25  |
| 3       | 003 006   | Ratchet Dog Bridge                | 1.50    | 55A     | 055 012H | L.S. Plate Bearing                | 12.25  |
| 4       | 004 012   | Gear Stud Washer                  | .50     | 57      | 057 109  | Spring (2 req.)                   | .65    |
| 4A      | 004 012H  | Click Button Washers (2 req.)     | .50     | 62      | 062 309  | Click Spring                      | 1.70   |
| 5       | 005 012H  | Main Gear                         | 9.90    | 63      | 063 030T | Stand Screws (4 req.)             | .80    |
| 7A      | 007A006   | Metal Ear Drag Washer             | 5.00    | 63A     | 063 209  | Click Spring Screw                | .50    |
| 7B      | 007B012H  | Pressure Plugs (2 req.)           | .50     | 69B     | 069B050  | Click Button Retaining Ring       | .80    |
| 13      | 013 012H  | Pinion Gear                       | 25.30   | 98      | 098 006  | Gear Ratchet                      | 1.50   |
| 14      | 014 006   | Dog Spring                        | 1.00    | 108     | 108 140  | Drag Lever Button Spring          | .45    |
| 15      | 015 006   | Dog                               | .80     | 110     | 110 050  | Center Quadrant Screw             | .50    |
| 16      | 016 006   | Bridge Screws (2 req.)            | .45     | 110A    | 110 060  | Handle Lock Screw                 | .45    |
| 16A     | 016 009   | Quadrant Screws (2 req.)          | .45     | 113A    | 113A006  | Drag Lever Button                 | .80    |
| 18      | 018 012T  | Disc Clutch Springs (4 req.)      | .90     | 113B    | 113B006  | Drag Lever Screw                  | 1.10   |
| 20      | 020L722   | Spool Bearings (2 req.)           | 12.00   | 117     | 117 012T | Drive Plate Assembly              | 10.50  |
| 20A     | 020A012H  | Thrust Washer                     | .50     | 123     | 123 050  | Drag Cover Screws (4 req.)        | .45    |
| 21      | 021 006   | Eccentric Lever                   | 25.00   | 125     | 125 006  | Gear Stud Housing                 | 7.50   |
| 23      | 023 060   | Handle Screw                      | 1.75    | 131     | 131 006  | Preset Knob Spring                | .90    |
| 23A     | 023 006CH | Gear Screw                        | 1.40    | 134     | 134 012H | Gear Stud                         | 8.00   |
| 24      | 024 012H  | Handle Complete                   | 12.60   | 141     | 141 006  | Cam Follower                      | 2.35   |
| 27      | 027 012T  | Left Side Plate Assembly          | 45.00   | 143     | 143 006  | Preset Knob                       | 4.00   |
| 29L     | 029L 012T | Spool                             | 58.00   | 143A    | 143A006  | Preset Knob Retaining Ring        | .50    |
| 30      | 030 012T  | Stand                             | 17.00   | 152A    | 152A030T | Rod Clamp Acorn Nut (2 req.)      | 1.35   |
| 32      | 032 014CH | Gear Stud Housing Screws (3 req.) | .40     | 156     | 156 012H | Drag Cover                        | 6.60   |
| 33      | 033 200   | Rod Clamp                         | 3.80    | 157     | 157 012  | Bridge Spacer Bushings (2 req.)   | .60    |
| *       | 033R200   | Ringed Rod Clamp (Optional)       | 6.25    | 157A    | 157 012T | Quadrant Spacer Bushings (2 req.) | .90    |
| 34      | 034 030T  | Rod Clamp Screws (2 req.)         | 1.95    | 183     | 183 012T | Tube Frame                        | 75.00  |
| 35      | 035 155   | Click Tongue                      | 1.00    | 253     | 253 012  | Thrust Bearing                    | 10.10  |
| 36      | 036 012H  | Click Button                      | 1.70    | 264     | 264 012T | Stand Gasket                      | 1.20   |
| 39      | 039 005   | Frame Screws (8 req.)             | .40     |         |          |                                   |        |